

# Ashfield Dining Chair

Ashfield Collection | Modern | Indoor Dining



The Ashfield Dining Chair combines modern sophistication with plush comfort, featuring a soft chenille tweed seat and backrest framed by a rich faux leather accent panel. Slender powder-coated steel legs anchor the design with industrial refinement, while generous armrests provide lasting support through lingering conversations and leisurely meals. Sold as a set of two chairs, the Ashfield brings effortless style to contemporary dining rooms and hospitality spaces alike.

# Ashfield Dining Chair

## M A T E R I A L S & C O N S T R U C T I O N

OVERALL WIDTH	22.8"
OVERALL DEPTH	22.8"
OVERALL HEIGHT	33.5"
SEAT WIDTH	22.0"
SEAT DEPTH	18.9"
SEAT HEIGHT	18.3"
ARM HEIGHT	25.2"
ARM WIDTH	2.2"
UPHOLSTERY	Chenille 100% Polyester
FRAME	Powder Coated Steel
WEIGHT CAPACITY	350 lbs
PRODUCT WEIGHT	16.1 lbs (per chair)

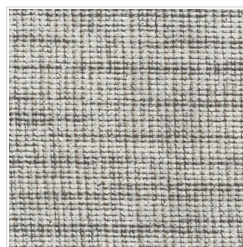
## S H I P P I N G

METHOD	Ground
CARTONS	1
CARTON DIMS	25" W × 36" L × 15" H / 38 lbs
GROSS WEIGHT	38 lbs
ASSEMBLY	Required
ORIGIN	China
WARRANTY	3 years of limited warranty

## F E A T U R E S

- Soft chenille fabric with faux leather accent
- Powder coated steel frame
- Supportive armrests
- Rubber feet prevent floor scratches
- Supports up to 350 lbs

## F I N I S H



### Gray Tweed

Chenille Fabric / Faux Leather / Steel



*Colors may vary slightly due to screen settings.*

*Sold as a set of 2 chairs. Dimensions shown are per chair.*

# Ashfield Dining Chair

## D I M E N S I O N S



FRONT VIEW



SIDE VIEW

OVERALL		SEAT		ARM & CLEARANCE		OTHER	
WIDTH	22.8"	WIDTH	22.0"	ARM HEIGHT	25.2"	WEIGHT	16.1 lbs
DEPTH	22.8"	DEPTH	18.9"	ARM WIDTH	2.2"	CAPACITY	350 lbs
HEIGHT	33.5"	HEIGHT	18.3"	LEG HEIGHT	24.4"	ASSEMBLY	Required